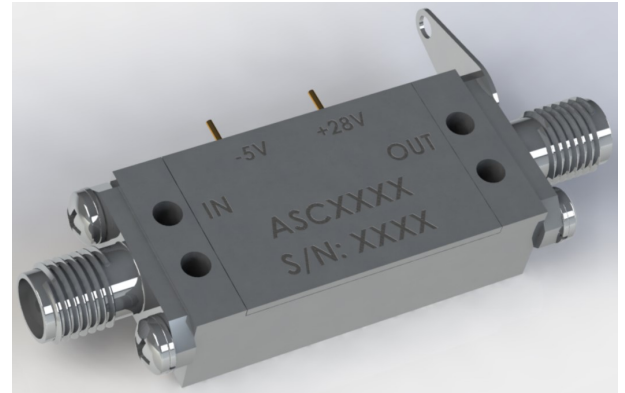


Features: (typical values)

- QORVO QPA1003P in SMA-F
- Output Power +40dBm
- Gain 30dB
- Internal DC blocking capacitors.
- Unconditional Stability
- Requires +28V and -5V Supplies
- Requires heat sink
- All-purpose GaN driver
- Optional: Available in Single +30V Supply

1000-8000 MHz.
Wideband 10W GaN Amplifier



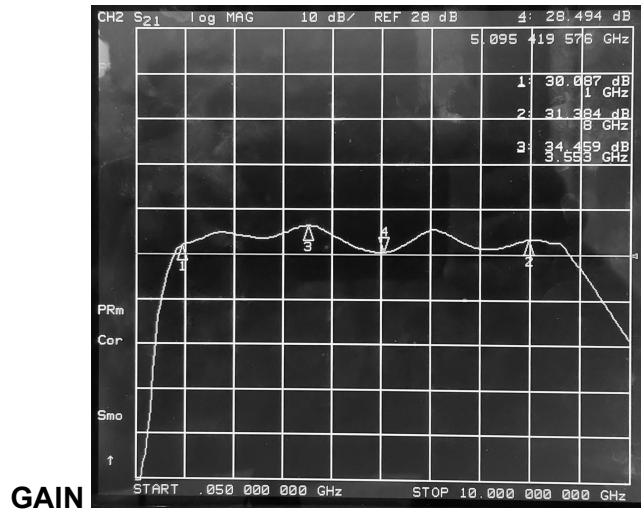
Maximum Ratings

Operating Base Temp. -30°C to +70°C
 Storage temperature -60°C to +125°C
 DC Operating Voltage +28/-5V
 RF Input Power +17 dBm. Max

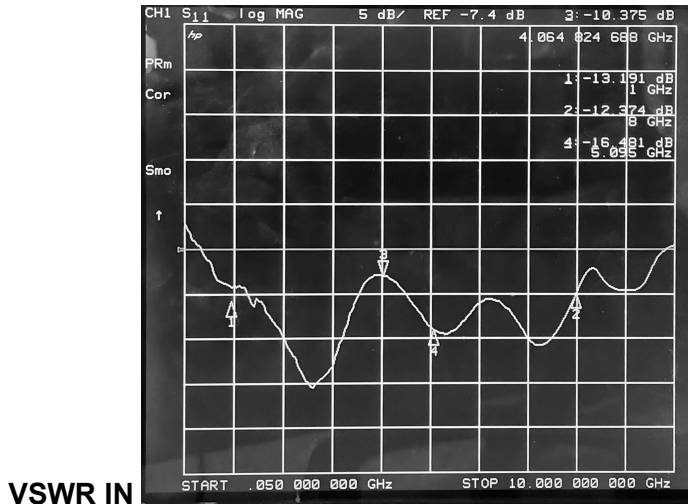
Specifications @ Tcase = 25°C, Vcc = +28V and -5V , 50-ohm systems unless otherwise noted.

Parameter	Typical Conditions	Min Value	Max Value	Units
Frequency Range		1000	8000	MHz.
Gain	30	28		dB.
Gain Flatness	±1.0		±2.0	dB.
Input VSWR – 50 OHMS	2.5:1			-
Output VSWR – 50 OHMS	2.5:1			-
PAE @ Pin =15dbm	30			%
Output Power	40	38		dBm.
INPUT/OUTPUT Connector SMA-F				.
Supply Current Idq @ +28 Drain Voltage and -5V Gate	650			mA

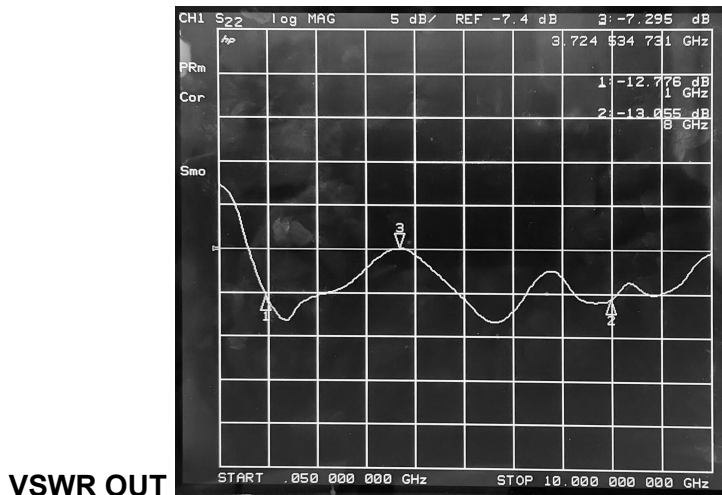
TYPICAL GAIN, INPUT VSWR, AND OUTPUT VSWR CURVES @ 25°C



GAIN

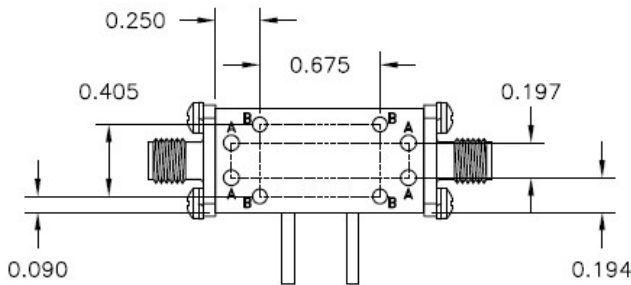
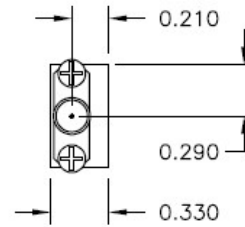
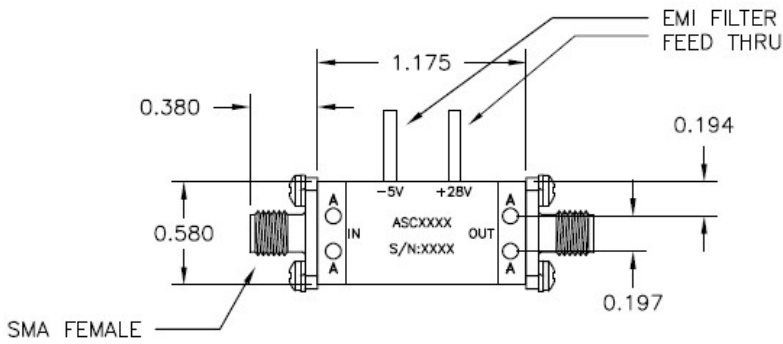
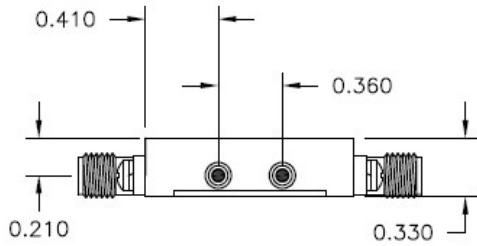


VSWR IN



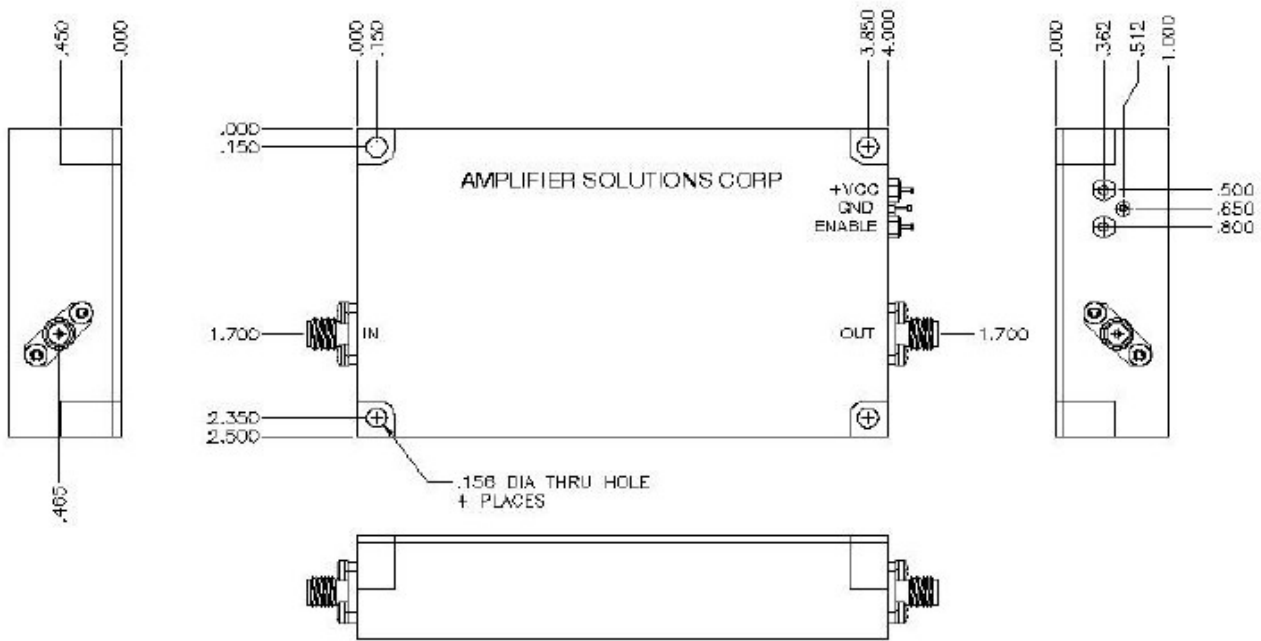
VSWR OUT

OUTLINE

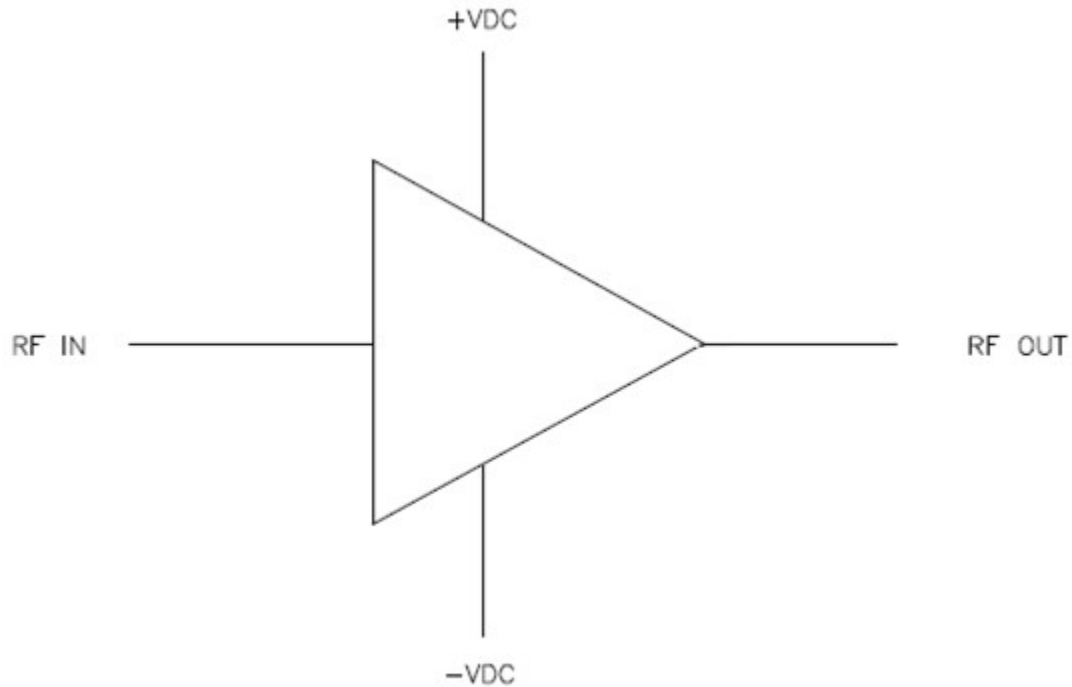


HOLE CHART	
HOLE	DESCRIPTION
A	∅0.090 THRU
B	#2-56-UNC-2B, .100 DP MIN

OPTIONAL FOR HOUSING SINGLE +30V SUPPLY



FUNCTIONAL BLOCK DIAGRAM



NO EXTERNAL COMPONENT REQUIRED